

RHVC



MVA

MVA



CCS



CNAS



BV



CE

## RHVC-

RHVC  
KV/ HI

RHVC

PWM

V/ HI KV/ HI KV/ HI V/ HI . KV/ HI

IGBT

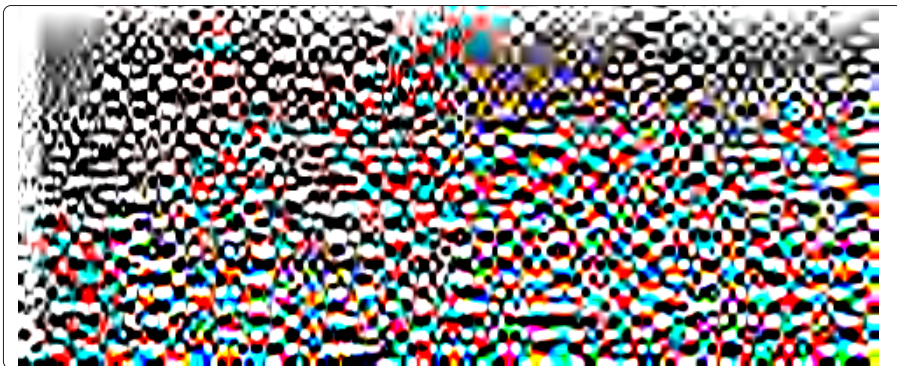
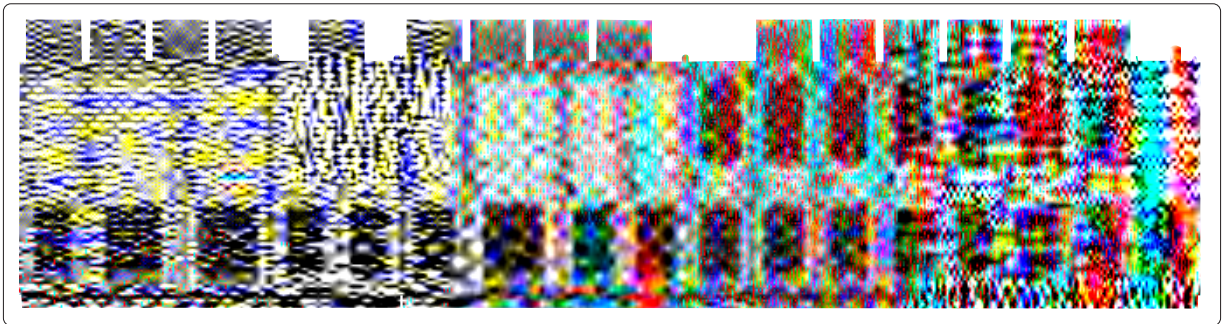


## RHVC-

- 可提供采用两电平或三电平拓扑结构的低压交流变频电源产品
-

RHVC





/



/





	GB/T
	GB/T
	IEC/ISO/IEEE
	IEC/ISO/IEEE
	IEC/ISO/IEEE
	JTS
	JT/T
	JT/T
	IEC
EMC	IEC
	GB/T
	GB/T
	GB
	GB/T



## SCT

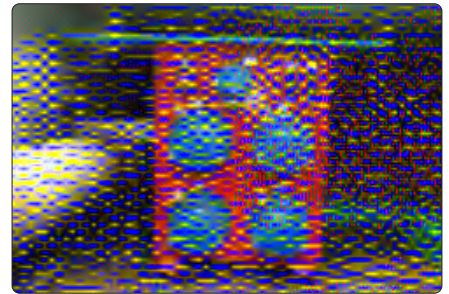
kV/ HI  
. kV/ HI      V/ HI  
kVA

## CCS



SCT

kV/ HI  
. kV/ HI      kV/ HI  
kVA



# RHVC

EPC

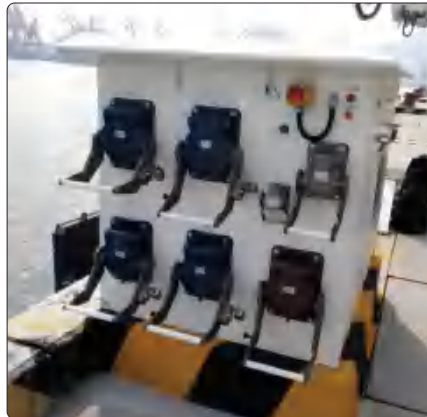
. kV/ HI  
. kV/ HI kV/ HI  
kVA

GT

. kV/ kV/ HI

kVA

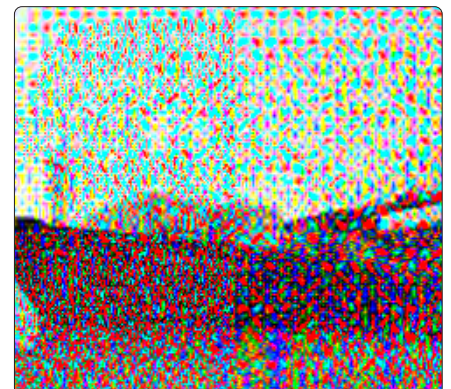
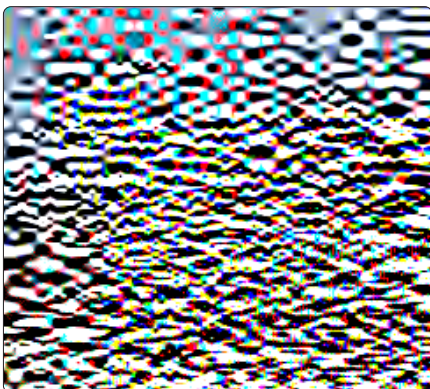
kV/ HI  
HI



. kV/ HI  
. kV/ HI kV/ HI  
kVA

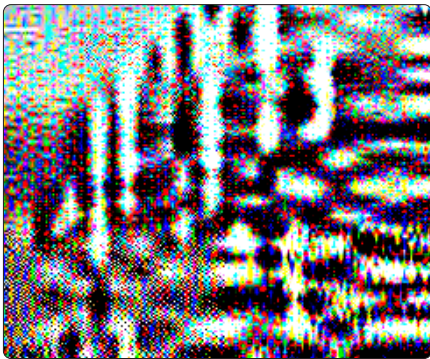
MVA

. kV@ HI / kV@ HI



kV/ HI  
 . kV/ HI kV/ HI  
 kVA

kV/ HI . kV/ HI kV/ HI



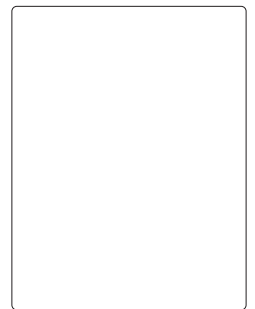
\* MVA

EPC

kV/ HI  
 . kV/ HI kV/ HI  
 kVA

MVA

kV



# RHVC

kV/ HI

. kV/ HI kV/ HI

kVA

kVA

kW h

MVA

MVA

AC V/ HI

MW/



kV/ HI

V- V/ HI HI

kVA

kV/ HI

V/ HI / HI

V/ HI

V

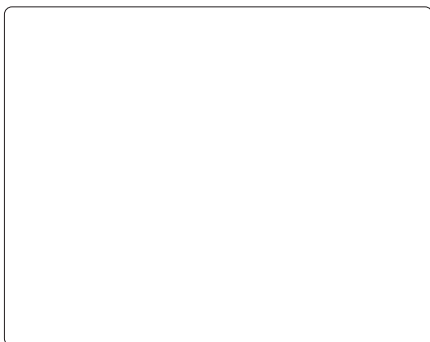
V

V / HI

V/ HI ( )

V / HI

. MVA



## Bayport

kV/ HI

. kV/ HI

kVA/ kVA

kV

. kV

kV

. kV

MVA/ MVA



kV/ HI

DC V

kW

DC V

kV/ HI



